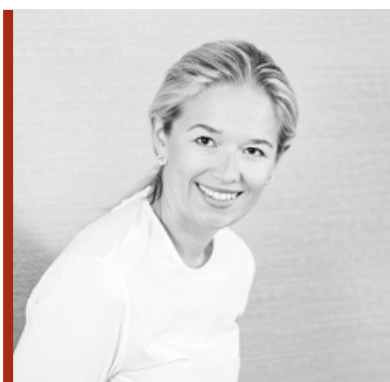


ANNIKA SCHAUMAN



Title: *Senior Associate*

Office: *Helsinki*

Telephone: *+358 9 2288 4330*

Mobile: *+358 40 508 3567*

E-mail: *annika.schauman@hannessnellman.com*

Languages: *English, Finnish, Swedish*

Assistant: *Elina Aulis*

Assistant's telephone: *+358 9 2288 4311*

Assistant's e-mail: *elina.aulis@hannessnellman.com*

PRACTICE & EXPERIENCE

Annika advises clients in the field of domestic and cross-border mergers and acquisitions and in particular private equity transactions, and she also offers corporate, commercial, and contract law advice. Annika has several years' experience of leverage finance, business strategy, and board work. Annika worked as an associate at EQT Partners in Stockholm and Helsinki in 2014–2018, and before that she had gained experience as an analyst at Access Partners in Stockholm and Helsinki and as an analyst trainee at J.P. Morgan Chase Investment Bank in London.

RECENT REFERENCES

> Counsel to EVRY in the combination of Tieto and EVRY through a cross-border merger , 2019

EDUCATION AND PROFESSIONAL BACKGROUND

- > Senior Associate, Hannes Snellman, Helsinki, 2018 -
- > Associate, EQT Partners, Helsinki, 2016-2018
- > Associate, EQT Partners, Stockholm, 2014-2016
- > Associate, Access Partners, Stockholm, 2013-2014
- > Analyst, Access Partners, Helsinki, 2010-2013
- > Master of Laws, Helsinki University, 2013
- > MSc. (Finance), Helsinki School of Economics, 2011