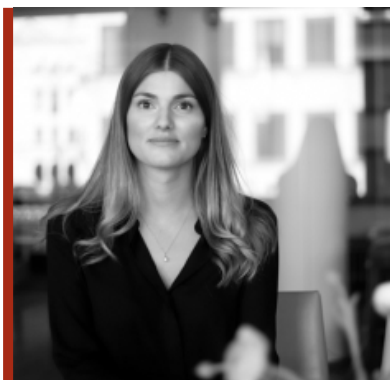


LOUISE KLERBRO



Title: *Associate*
Office: *Stockholm*
Mobile: *+46 760 000 091*
E-mail: *Louise.Klerbro@hannessnellman.com*
Languages: *English, Swedish*

PRACTICE AND EXPERIENCE

Louise works mainly within the field of dispute resolution.

EDUCATION AND PROFESSIONAL BACKGROUND

- > Associate, Hannes Snellman, Stockholm, 2018
- > Jur. kand. (LL.M.), Uppsala University, 2018
- > KU Leuven, Belgium, Faculty of Law, 2017